

veterinary technology for life

# Eickemeyer®

[www.eickemeyer.com](http://www.eickemeyer.com)

Telephone +49 7461 96 580 0

## *OrthoVet PRO*

### *Battery Powered Drill System*



**modular,  
handy,  
wireless**

## ORTHOVET PRO BATTERY POWERED DRILL SYSTEM – COMPONENTS

### The ideal tool for small animal osteosynthesis

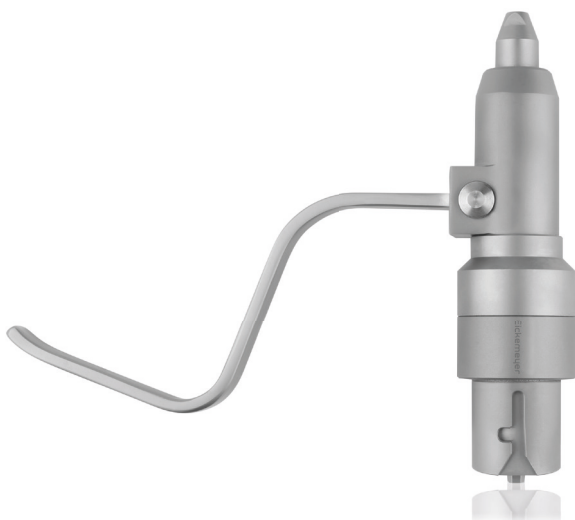
The OrthoVet PRO is a modular, battery-driven drill system designed for small animal osteosynthesis. The modular system consists of a handpiece and four attachments, which can be changed intraoperatively in just a few seconds with a keyless quick coupling.

The handpiece, the quick-release AO Chuck and the Jacobs chuck are cannulated. Thus, cannulated screws or drills can also be tracked over long guide wires in stages, without the guide wire having to be shortened. The oscillating saw has a five-fold adjustable, variable fixation of the saw blade and allows the surgeon an optimised view of the surgical field. The AO quick-release chuck completes the system and makes the OrthoVet PRO a real all-rounder.

Handpiece and attachments can be sterilised / autoclaved. The Li-Ion battery is not autoclavable and is inserted into the handpiece by means of a special holder. Continuous operation is possible in clockwise and anticlockwise motion and, as well as in oscillation with the aw attachment.



195001



195003



195002



195004



195005

## ORTHOVET PRO BATTERY POWERED DRILL SYSTEM – CHARACTERISTICS

---

A 5-fold variable fixation of the saw blade in its fitting allows the surgeon an optimised view of the surgical field (Fig. 1).

The OrthoVet PRO battery powered drill system can be instantly operated by means of the “trigger” on the handpiece, speeds of 0–1,200 rpm or 0–16,000 osc./min.

Handpiece and attachments can be sterilised / autoclaved. For this purpose a washer compatible sterilisation tray (item no. 195087) as well as a suitable sterilisation container (item no. 185555) are optionally available.

The battery (item no. 195007) must not be sterilised/autoclaved! It is inserted into the handpiece via a funnel.

For details on handling and construction, refer to the operating instructions.

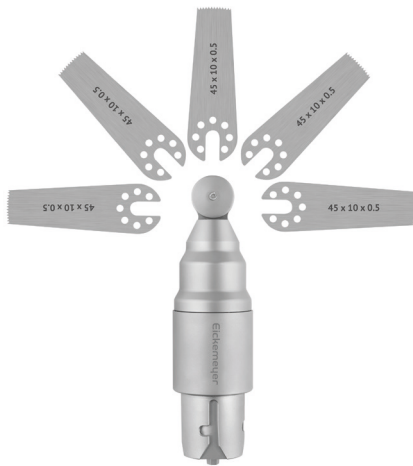
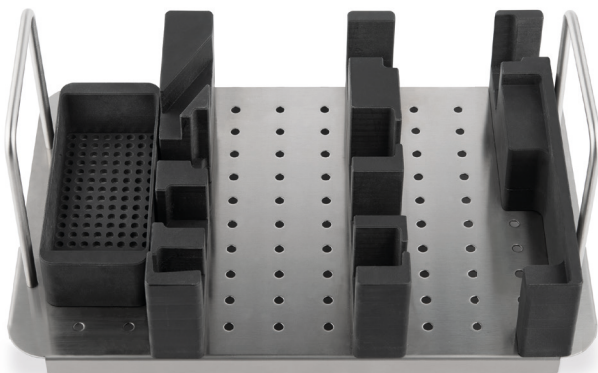


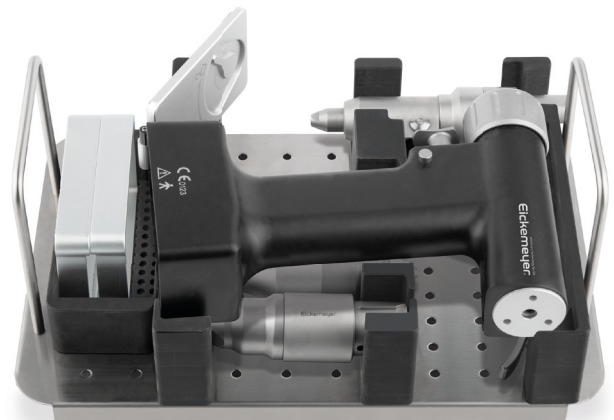
Figure 1



185555



195087



Application

## ORTHOVET PRO BATTERY POWERED DRILL SYSTEM – ITEM LIST

| OrthoVet PRO Battery powered Drill System |   |          |
|---|---|----------|
| Item no.                                  | Description   | Quantity |
| 195000                                    | OrthoVet PRO Battery powered Drill System, consisting of:                                   |          |
| 195001                                    | OrthoVet PRO Handpiece, without adapters and battery  | 1        |
| 195002                                    | OrthoVet PRO Jacobs Chuck Adapter, clamping range Ø 0.6 – 2.5 mm                            | 1        |
| 195003                                    | OrthoVet PRO Quick Coupling Adapter for Pins/KIRSCHNER-Wires, clamping range Ø 0.6 – 2.5 mm | 1        |
| 195004                                    | OrthoVet PRO Quick Coupling Adapter for AO Tools  | 1        |
| 195005                                    | OrthoVet PRO Oscillating Saw Adapter  | 1        |
| 195006                                    | OrthoVet PRO Battery Charging Station   | 1        |
| 195007                                    | OrthoVet PRO Battery  | 2        |
| 195084                                    | OrthoVet PRO Key to Jacobs Chuck Adapter  | 1        |
| 195008                                    | OrthoVet PRO Funnel for Handpiece   | 2        |
| 195010                                    | OrthoVet PRO Transportation Case, metal, dimensions (in mm): L 390 x W 290 x H 120          | 1        |
| 195030                                    | OrthoVet Saw Blade with AESCULAP Connection, dimensions (in mm): L 40 x W 15 x H 0.5        | 1        |
| 195040                                    | OrthoVet Saw Blade with AESCULAP Connection, dimensions (in mm): L 40 x W 5 x H 0.5         | 1        |
| 195050                                    | OrthoVet Saw Blade with AESCULAP Connection, dimensions (in mm): L 30 x W 7 x H 0.5         | 1        |
| 195060                                    | OrthoVet Saw Blade with AESCULAP Connection, dimensions (in mm): L 50 x W 14 x H 0.5        | 1        |

| Optional Accessories |   |          |
|----------------------|---|----------|
| Item no.             | Description   | Quantity |
| 196130               | OrthoVet Saw Blade AESCULAP with Connection, dimensions (in mm): L 50 x W 6.5 x H 0.5       | 1        |
| 196140               | OrthoVet Saw Blade AESCULAP with Connection, dimensions (in mm): L 50 x W 8 x H 0.5         | 1        |
| 196150               | OrthoVet Saw Blade AESCULAP with Connection, dimensions (in mm): L 45 x W 10 x H 0.5        | 1        |
| 196165               | OrthoVet Saw Blade AESCULAP with Connection, dimensions (in mm): L 39 x W 13 x H 0.5        | 1        |
| 196170               | OrthoVet Saw Blade AESCULAP with Connection, dimensions (in mm): L 58 x W 10 x H 0.5        | 1        |
| 196180               | OrthoVet Saw Blade AESCULAP with Connection, dimensions (in mm): L 64 x W 10 x H 0.5        | 1        |
| 196190               | OrthoVet Saw Blade AESCULAP with Connection, dimensions (in mm): L 70 x W 14 x H 0.5        | 1        |
| 195087               | OrthoVet PRO Battery Drill System Sterilisation Tray, empty                                 | 1        |
| 185555               | Container, bottom non perforated, lid perforated, dimensions (in mm): L 312 x W 183 x H 122 | 1        |
| 563706               | AESCULAP Oil Spray STERILIT, with lubrication and corrosion protection, 300 ml              | 1        |
| 195011               | OrthoVet PRO Cleaning Brush, Ø 4.0 mm, length 350 mm, pack of 3 pieces                      | 1        |